

# ALSA

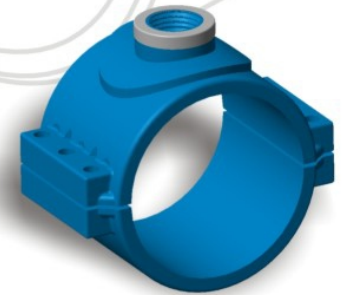
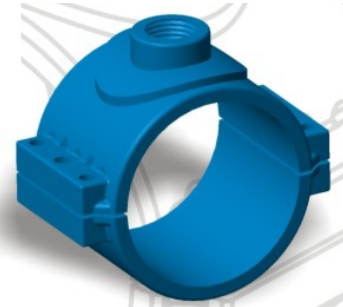
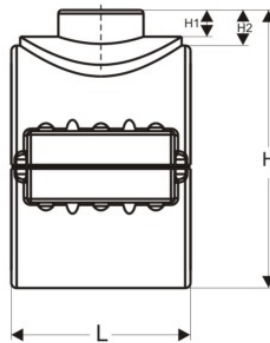
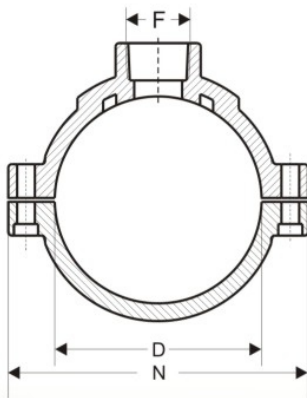


**SALES AND SERVICES, LLC**  
WATER MANAGEMENT SOLUTIONS



## CLAMP SADDLES

for HDPE and PVC pipes  
**IPS SIZING**



**FIELDS OF APPLICATION**  
piping network  
golf course  
irrigation

### MATERIALI-MATERIALS

**Corpo Body** Polipropilene Copolimero/Copolymer polypropilene  
**Viti e Bulloni Bolts and nuts** Acciaio galvanizzato/Galvanized Steel

**Guarnizione O.Ring:** Gomma nitrilica/Nitrilic rubber  
**Anello di rinforzo Reinforced ring** Acciaio Inox/stainless steel

\* available with Bolts and nuts in Stainless Steel A2 AISI 304

Clamp	D	F	N	H	H1	H2	L	N° BOLT
2"	60.3	1/2" NPT	102.7	96.5	18.6	18.6	67.5	4
		3/4" NPT		96.5	18.6	18.6		
		1" NPT		97.5	19.6	19.6		
3"	88.9	1/2" NPT	131	125.9	13.8	18.6	84.3	6
		3/4" NPT		125.9	13.8	18.6		
		1" NPT		126.9	14.8	19.6		
4"	114.3	1/2" NPT	158	152	14	18.5	98.2	6
		3/4" NPT		152	14	18.5		
		1" NPT		153	15	19.5		
6"	168.28	1/2" NPT	228.5	208	14	19	139	6
		3/4" NPT		208	14	19		
		1" NPT		209	15	20		
		1 1/4" NPT		215	21	26		
		1 1/2" NPT		215	21	26		
		2" NPT		215	21	26		

nominal  
working pressure  
**PN 16**

Reference: ASTM D 3035,  
F714 and AWWA C- 901/906



# ALSA



SALES AND SERVICES, LLC.

5220 N.W. 72nd. Ave. E-19, Miami, Florida, USA 33166  
Phone: 305-591-7738 Fax: 305-599-2292  
[sales@alsa-international.com](mailto:sales@alsa-international.com) - [www.alsa-international.com](http://www.alsa-international.com)